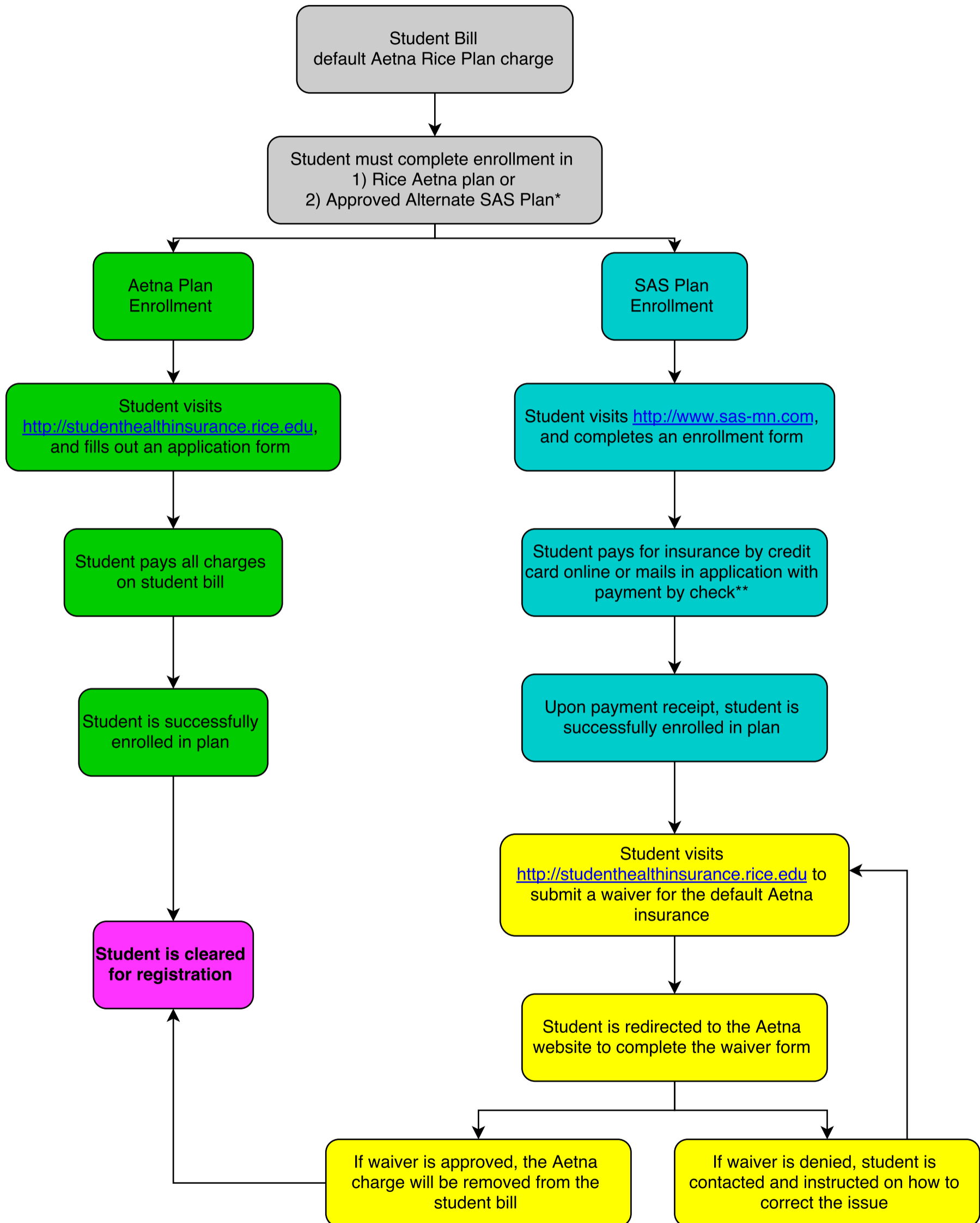


# Student Health Insurance Enrollment Process

revised 6/26/2015

All Rice sponsored F-1 and J-1 students are required to purchase either Aetna or SAS to comply with Rice's health insurance policy for international students



\*All students who fail to enroll or successfully waive by September 4th will automatically be enrolled in the Aetna plan with no opportunity to waive or make special selections in the plan.

\*\*If paying by check, please notify OISS via [oiss@rice.edu](mailto:oiss@rice.edu) to confirm enrollment